



Factory Five Racing, Inc.

Part Number: 14797	Revision: <u>C</u>	Effective Date: <u>05/17/11</u>	By: <u>J.Ingerslev</u>
Document Type (indicate):			
◦ Bill of Material	◦ Drawing (may be attached)	◦ Specification	
• Assembly Instructions	◦ Operating Procedure	◦ Other	

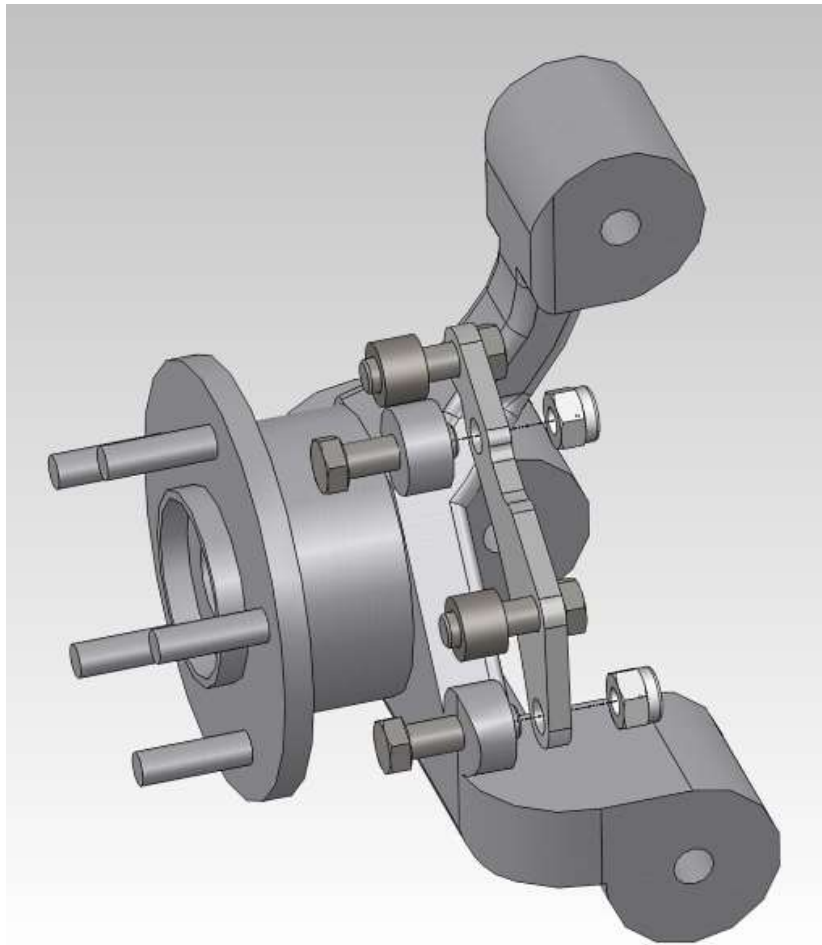
11.65” IRS Brake Instructions

Parts included in kit

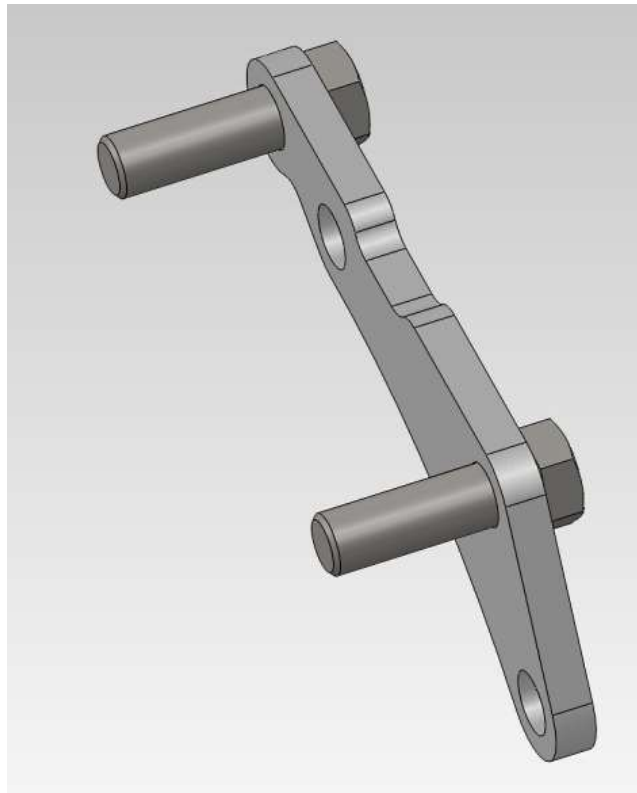
14778	11.65" IRS BRAKES	EA	1.00
14797	11.65" IRS BRAKE INSTRUCTIONS	EA	1.00
14780	IRS CALIPER BRACKET	EA	2.00
15290	IRS CALIPER BOLT	EA	8.00
13751	M12 GRADE 10.9 LOCKNUT	EA	4.00
14775	IRS CALIPER SPACER	EA	4.00
14777	11.65" REAR ROTOR	EA	2.00
14525	DRIVER REAR CALIPER W/CALIPER BRACKET	EA	1.00
14526	PASSENGER REAR CALIPER W/CALIPER BRACKET	EA	1.00
14793	REAR BRAKE PADS	EA	1.00
14419	FRONT LOWER CONTROL ARM BOX	EA	1.00
14420	FRONT LOWER CONTROL ARM BOX INSERT	EA	2.00
14754	REAR BRAKE LINE COMPONENTS	EA	1.00
14709	BRAKE LINE MOUNT CLIP	EA	2.00
14689	BRAIDED LINE BRAKE LINE MOUNT	EA	2.00
25507	BRAKE LINE "T" ADAPTER, 2 FEMALE, 1 MALE	EA	1.00
14493	REAR BRAKE STAINLESS HOSES AND FITTINGS	EA	1.00
14686	17" STAINLESS BRAIDED 35° BANJO BRAKE LINE	EA	2.00
25505	STRAIGHT 3-AN TO 3/8" FEMALE IF	EA	2.00
25820	CRUSH WASHER	EA	4.00
14691	10MM x 1.5MM BANJO BOLT	EA	2.00

3/4” wrench, 3/4” socket, ratchet, 3/4”, 5/16” Hex key, flat head screwdriver, Torque Wrench, Thread locker.

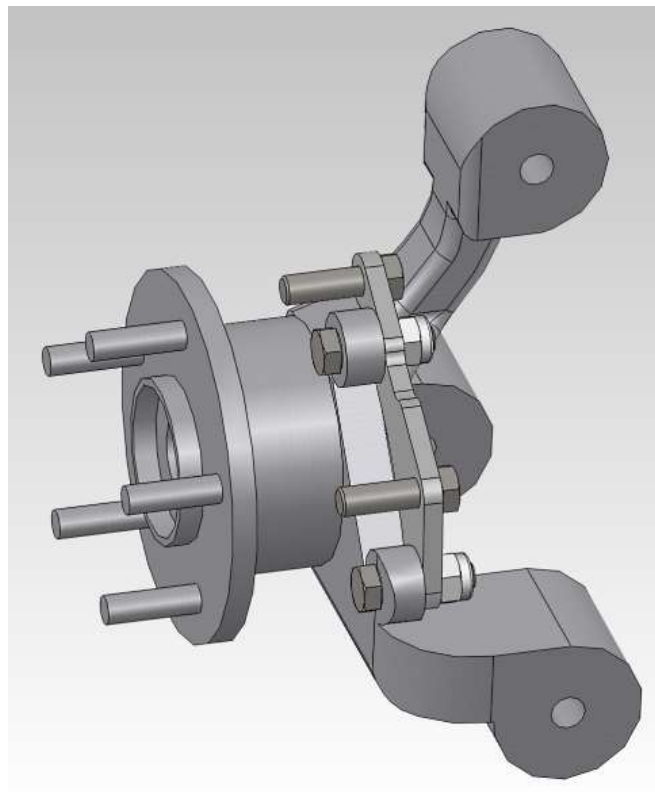
Bolts used on the caliper that do not use a locknut should have Loctite or other thread locker applied before installing.



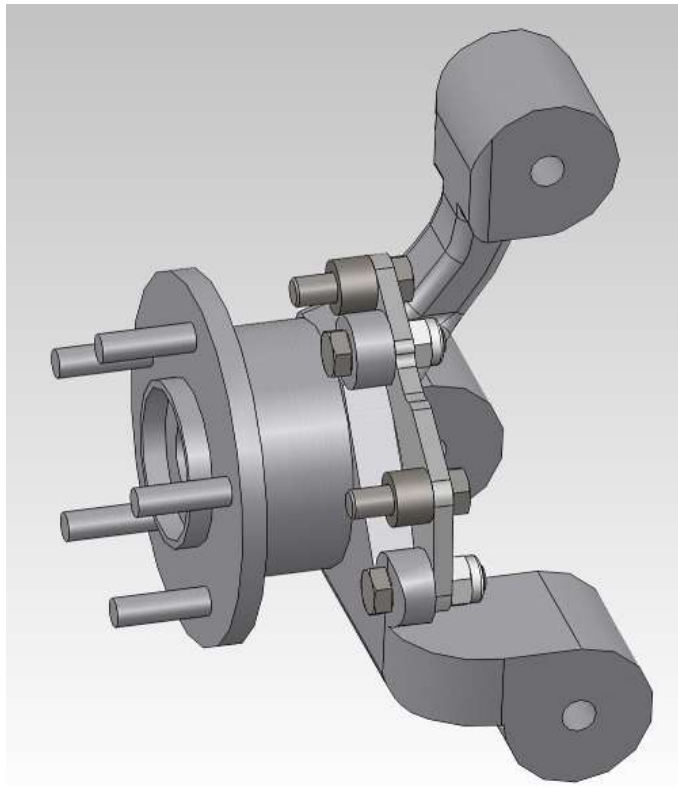
Insert a hex head bolt through the Caliper Mount Bracket hole so that the threads will point out.



From the outside in, insert two hex head bolts through the Spindle caliper mount holes then through the caliper mount bracket. Torque the bolts to **87-101Nm (64-75 lbft)**.



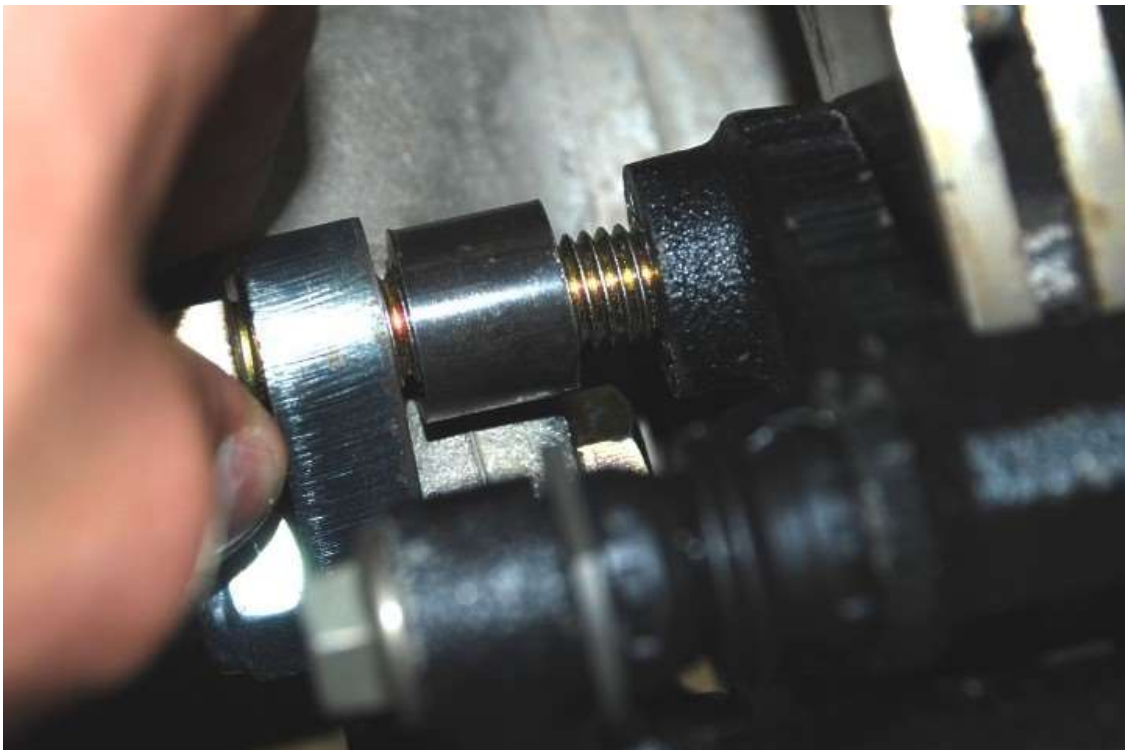
Place the caliper mount spacers on the bolts facing out.



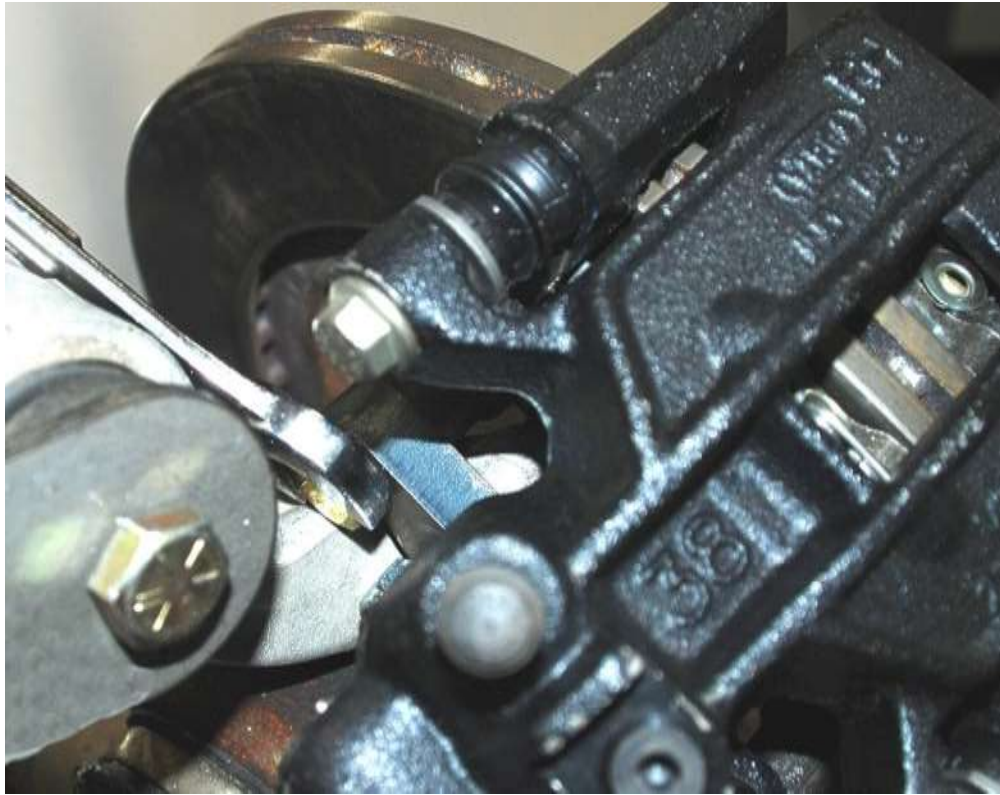
Place the brake rotor on the spindle

Load the caliper with the brake pads

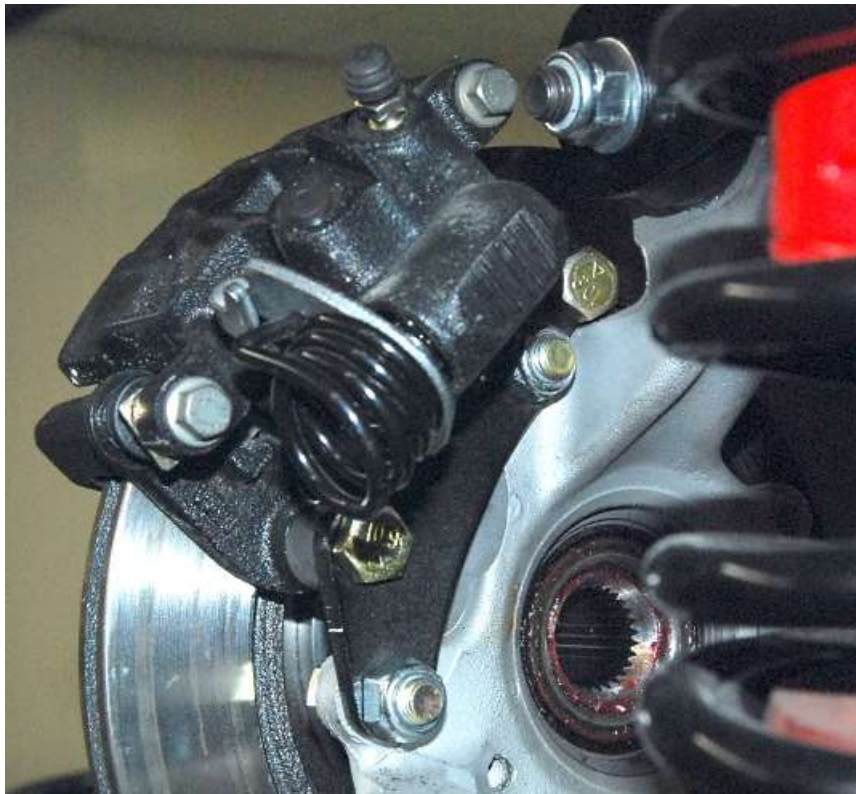
Put a dot of Loctite on the threads of the two bolts with the spacers on.



Attach the caliper to the caliper mount bracket. Hand tighten both bolts starting with the top on first. Keep the head of the bolt near the caliper adapter bracket in order to tighten it.



Tighten the top mount bolt with a $\frac{3}{4}$ " wrench.





Attach the emergency brake cable to the caliper. This is easily done by pulling on the back of the caliper slightly and pushing the cable into the mount. The cable will be very close to or touch the adapter bracket. If necessary, file a small angled recess in the adapter bracket. The caliper floats so it will only get further away from the bracket as the pads wear.

Route the emergency brake cable so that it curves to the rear of the lower control arm and attach the cable to the arm using zip ties from the kit.

Run the emergency brake cable to the top bracket in the transmission tunnel then down under the 4" round crossmember and up to the Emergency Brake "T" cable and handle.