





Factory Five Racing, Inc.

Part Number: <u>11295</u>	Revision: <u>L</u>	Effective Date: <u>02/05/14</u>	By/Date: <u>J. Ingerslev</u>
Document Type (indicate):			
<input type="radio"/> Bill of Material	<input type="radio"/> Drawing (may be attached)	<input type="radio"/> Specification	
<input checked="" type="radio"/> Assembly Instructions	<input type="radio"/> Operating Procedure	<input type="radio"/> Other	

Hood Hinge Installation Instructions

-  $\frac{3}{16}$ " Drill bit, drill, measuring tape, rivet gun, marker, $\frac{3}{16}$ " hex key, $\frac{1}{2}$ " wrench
-  Hood hinge



The hood hinge pivot mounts attach to the hood using rivets, the holes are predrilled in the hood liner but you may need to clean them out with a $\frac{3}{16}$ " drill bit. This is the initial install so you only need a few rivets if you are going to remove the hinge brackets prior to body painting (recommended).



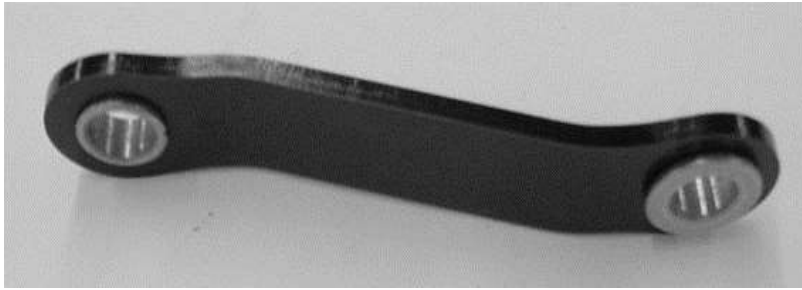
Install the ball pivots for the hood struts on the hood using $\frac{3}{16}$ " rivets. The ball points toward the inside of the car.



Press the bronze bushings into the holes in the hinge arms as shown. The short hinge arms are both the same. Left side long arm shown.



Right side long arm with bushings pressed in



Short arm with bushings pressed in.

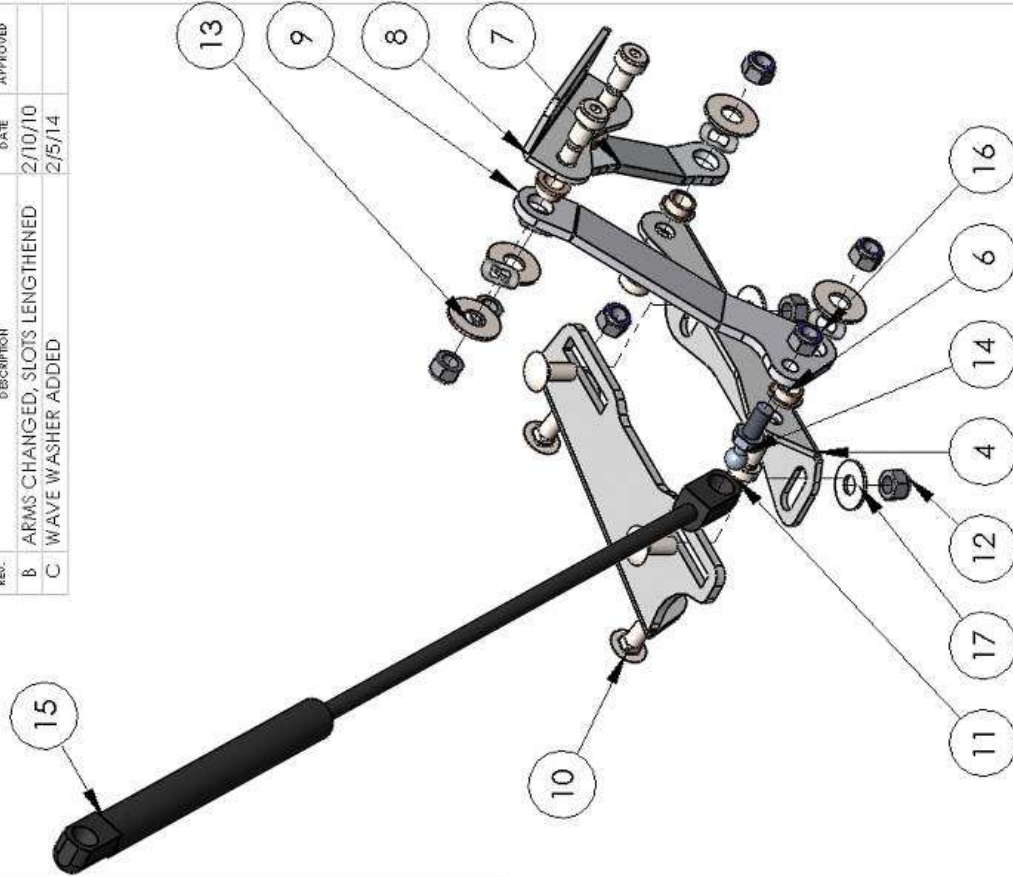
Attach the hinge arms to the arm support plate as shown on the following pages using the $\frac{3}{8}$ " shoulder bolts, wave washers, washers and nylon lock nuts. The flange of the bronze bushings should contact the arm plate. Tighten the nuts against the shoulder bolt shoulder. The spring washer will set the preload on the arms.



Use the thin stainless washers on the underside of the arm support plate

REVISIONS		
REV.	DESCRIPTION	DATE
B	ARMS CHANGED, SLOTS LENGTHENED	2/10/10
C	WAVE WASHER ADDED	2/5/14

ITEM NO.	PART NUMBER	DESCRIPTION	QTY.
1	15036	14006 - FRAME ADJUSTMENT PLATE, PASS	1
2	15036	14006 - FRAME ADJUSTMENT PLATE, DRIVER	1
3	15038	13520 - ARM SUPPORT PLATE, PASS	1
4	15038	13452 - ARM SUPPORT PLATE, DRIVER	1
5	15145	15144- PASSENGER SIDE LONG ARM	1
6	13183	Bronze flange bearing	8
7	25410 - SHORT ARM	SHORT ARM, (R,L)	2
8	13946	HOOD MOUNT PLATE	2
9	15145	15143- DRIVER SIDE LONG ARM	1
10	RHSNBOLT0.3125-18x0.75x0.75-N		8
11	SHSSCREW 0.375x0.5-N	NYLON INSERT LOCKNUT, 5/16-18 UNC	8
12	NLN-3125C		18
13	Regular FW 0.375		8
14	13469 - THREADED BALL STUD	THREADED BALL STUD	2
15	14007	14007 - GAS SPRING	2
16	92161A030		8
17	Regular FW 0.3125		4



UNLESS OTHERWISE SPECIFIED:		NAME	DATE
DIMENSIONS ARE IN INCHES		J1	9/11/10
TOLERANCES:		DRAWN	
TWO PLACE DECIMAL ±0.01		COMMENTS	
THREE PLACE DECIMAL ±0.005		LEFT SIDE SHOWN	
FOUR PLACE DECIMAL ±0.001			
MATERIAL		ROADSTER	
FINISH			
USED ON		APPLICATION	
		PRINTED 2/5/2014	
		SCALE: 1:3	
		WEIGHT:	
		SHEET 2 OF 2	

Factory Five Racing, Inc.

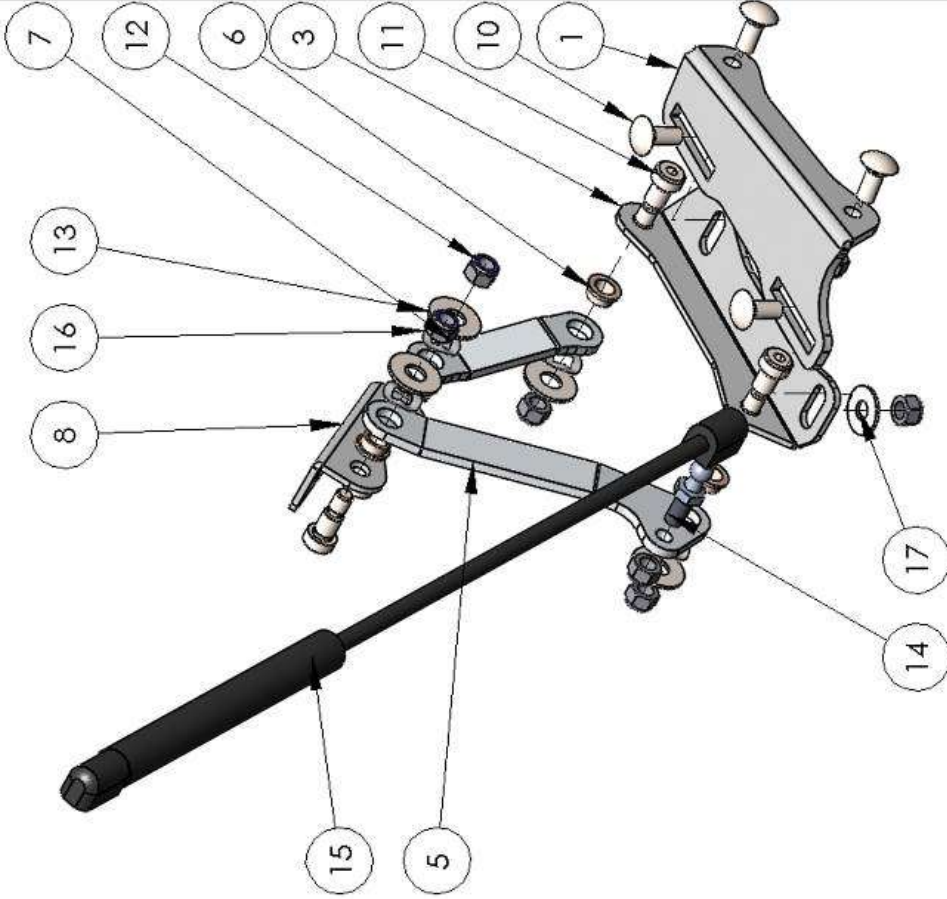
TITLE: ROADSTER HOOD HINGE

SIZE DWG. NO. REV
A **15131** **C**

PROPRIETARY AND CONFIDENTIAL
 THE INFORMATION CONTAINED IN THIS DRAWING IS THE SOLE PROPERTY OF FACTORY FIVE RACING, INC. ANY REPRODUCTION IN PART OR AS A WHOLE WITHOUT THE WRITTEN PERMISSION OF FACTORY FIVE RACING, INC. IS PROHIBITED.

ITEM NO.	PART NUMBER	DESCRIPTION	QTY.
1	15036	14006 - FRAME ADJUSTMENT PLATE, PASS	1
2	15036	14006 - FRAME ADJUSTMENT PLATE, DRIVER	1
3	15038	13520 - ARM SUPPORT PLATE, PASS	1
4	15038	13452 - ARM SUPPORT PLATE, DRIVER	1
5	15145	15144- PASSENGER SIDE LONG ARM Bronze flange bearing	1
6	13183		8
7	25410 - SHORT ARM	SHORT ARM, (R,L)	2
8	13946	HOOD MOUNT PLATE	2
9	15145	15143- DRIVER SIDE LONG ARM	1
10	RHSNBOLT 0.3125-18x0.75x0.75-N		8
11	SHSSCREW 0.375x0.5-N		8
12	NLN-3125C	NYLON INSERT LOCKNUT, 5/16-18 UNC	18
13	Regular FW 0.375		8
14	13469 - THREADED BALL STUD	THREADED BALL STUD	2
15	14007	14007 - GAS SPRING	2
16	92161A030		8
17	Regular FW 0.3125		4

REVISIONS		
REV.	DESCRIPTION	DATE
B	ARMS CHANGED, SLOTS LENGTHENED	2/10/10
C	WAVE WASHER ADDED	2/5/14



UNLESS OTHERWISE SPECIFIED:		NAME	DATE
DIMENSIONS ARE IN INCHES		J1	9/17/10
TOLERANCES:		DRAWN	COMMENTS: RIGHT SIDE SHOWN
TWO PLACE DECIMAL ±0.01			
THREE PLACE DECIMAL ±0.005			
FOUR PLACE DECIMAL ±0.001			
MATERIAL			
FINISH			
USED ON		PRINTED	2/5/2014
APPLICATION		SCALE: 1:3	WEIGHT:
ROADSTER			
<p>PROPRIETARY AND CONFIDENTIAL THE INFORMATION CONTAINED IN THIS DRAWING IS THE SOLE PROPERTY OF FACTORY FIVE RACING, INC. ANY REPRODUCTION IN PART OR AS A WHOLE WITHOUT THE WRITTEN PERMISSION OF FACTORY FIVE RACING, INC. IS PROHIBITED.</p>		<p>Factory Five Racing, Inc. TITLE: ROADSTER HOOD HINGE</p>	
<p>SIZE A DWG. NO. 15131 REV C</p>		<p>SHEET 1 OF 2</p>	



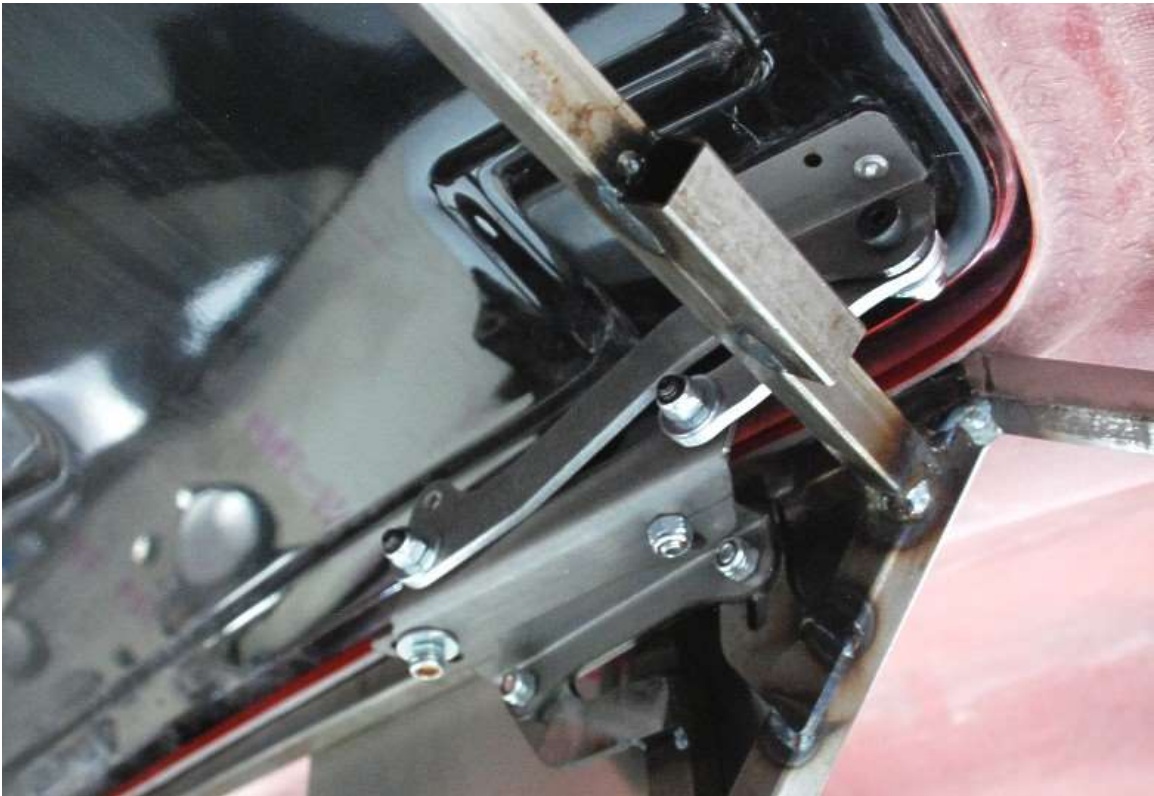
Right side shown



Attach the hinges to the chassis using the carriage bolts, these push in from the outside for easier adjustment.



Leave the bolts loose enough so that the hinge assembly can be positioned to match the hood.



Set the hood in place and attach the two arms to the brackets from the underside of the body.



If not already done, install the threaded ball studs in the hole on the long hinge arms with the ball pointed toward the outside of the car using a $\frac{5}{16}$ " locknut. Then snap the gas piston shaft onto the ball.



Attach the piston body end to the ball on the hood.