






Factory Five Racing, Inc.

Part Number: 80821	Revision: A	Effective Date: 2/28/14	By: J. INGERSLEV
--------------------	-------------	-------------------------	------------------

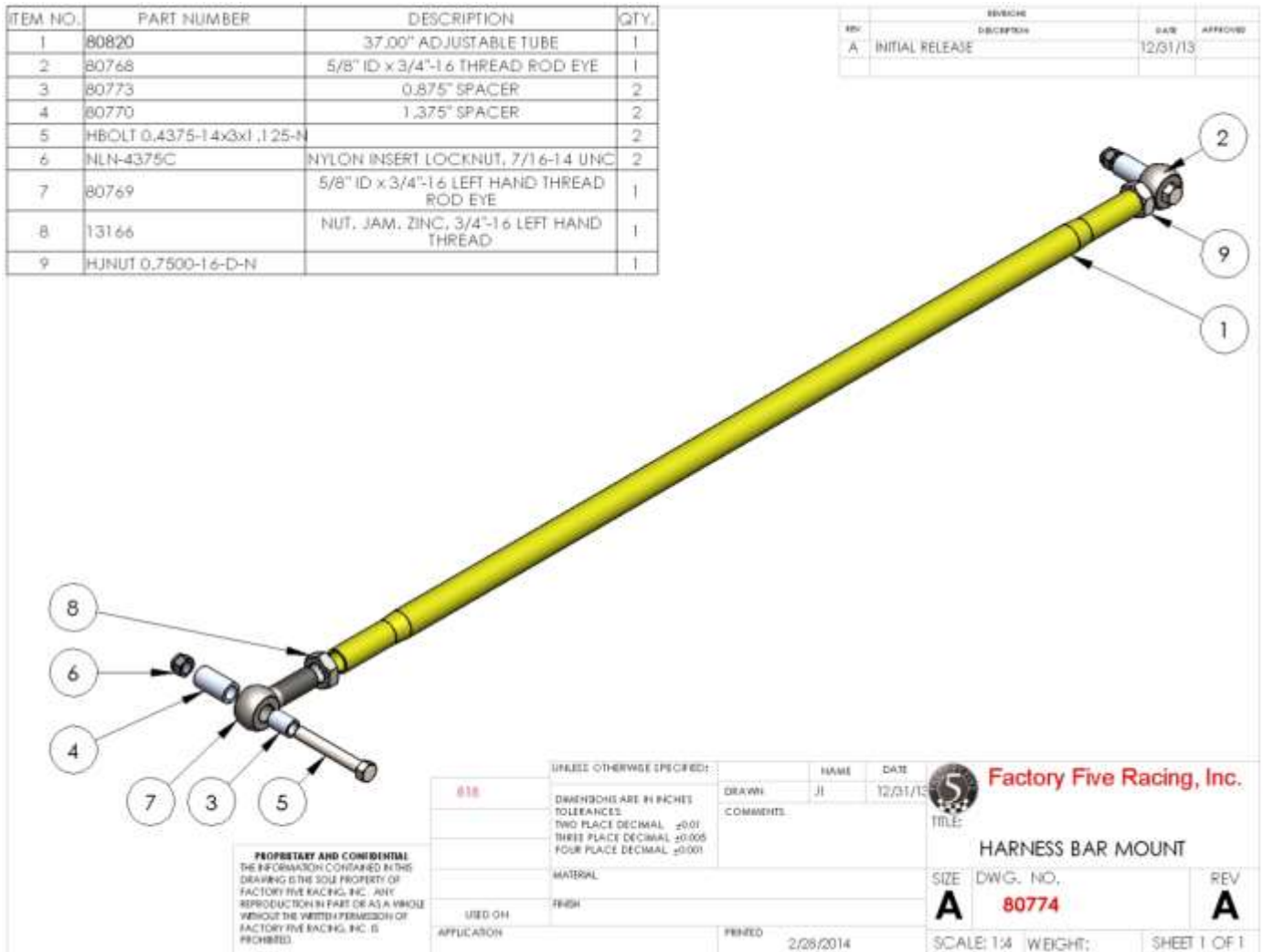
818 Harness bar mount

INSTALLATION INSTRUCTIONS

-  $5/8$ " socket, $5/8$ ", $15/16$ " wrench, ratchet
-  Seat harnesses
-  The harness bar may need trimming on the ends to fit the upper seat belt mount holes.

ITEM NO.	PART NUMBER	DESCRIPTION	QTY.
1	80820	37.00" ADJUSTABLE TUBE	1
2	80768	5/8" ID x 3/4"-1.6 THREAD ROD EYE	1
3	80773	0.875" SPACER	2
4	80770	1.375" SPACER	2
5	HBOLT 0.4375-14x3x1.125-N		2
6	NLN-4375C	NYLON INSERT LOCKNUT, 7/16-14 UNC	2
7	80769	5/8" ID x 3/4"-1.6 LEFT HAND THREAD ROD EYE	1
8	13166	NUT, JAM, ZINC, 3/4"-1.6 LEFT HAND THREAD	1
9	HJNUT 0.7500-1.6-D-N		1

REV.	DESCRIPTION	DATE	APPROVED
A	INITIAL RELEASE	12/31/13	



Assemble the rod eyes, jam nuts and spacers to the harness bar as shown above.



Attach the harness bar to the upper seat belt mount holes on the frame using the bolts and spacers provided. Adjust the tube as necessary so that the bolts fit through the holes.

