



Factory Five Racing, Inc.

Part Number: 80859

Revision: A

Effective Date: 09/10/2014

By: J.Ingerslev

Aluminum Shifter Instructions

- ✂ Ratchet, drill, $\frac{1}{4}$ " , $\frac{25}{64}$ " drill bits, $\frac{1}{4}$ " hex key, Rivnut tool, $\frac{3}{8}$ " , $\frac{7}{16}$ " wrenches, marker, clamp, pliers.



Remove the plastic cup from the ball stud using a pair of pliers to pry it off.



Screw the ballstud into the shifter so that the center of the ball is $1\frac{5}{16}$ " from the end of the shifter rod.



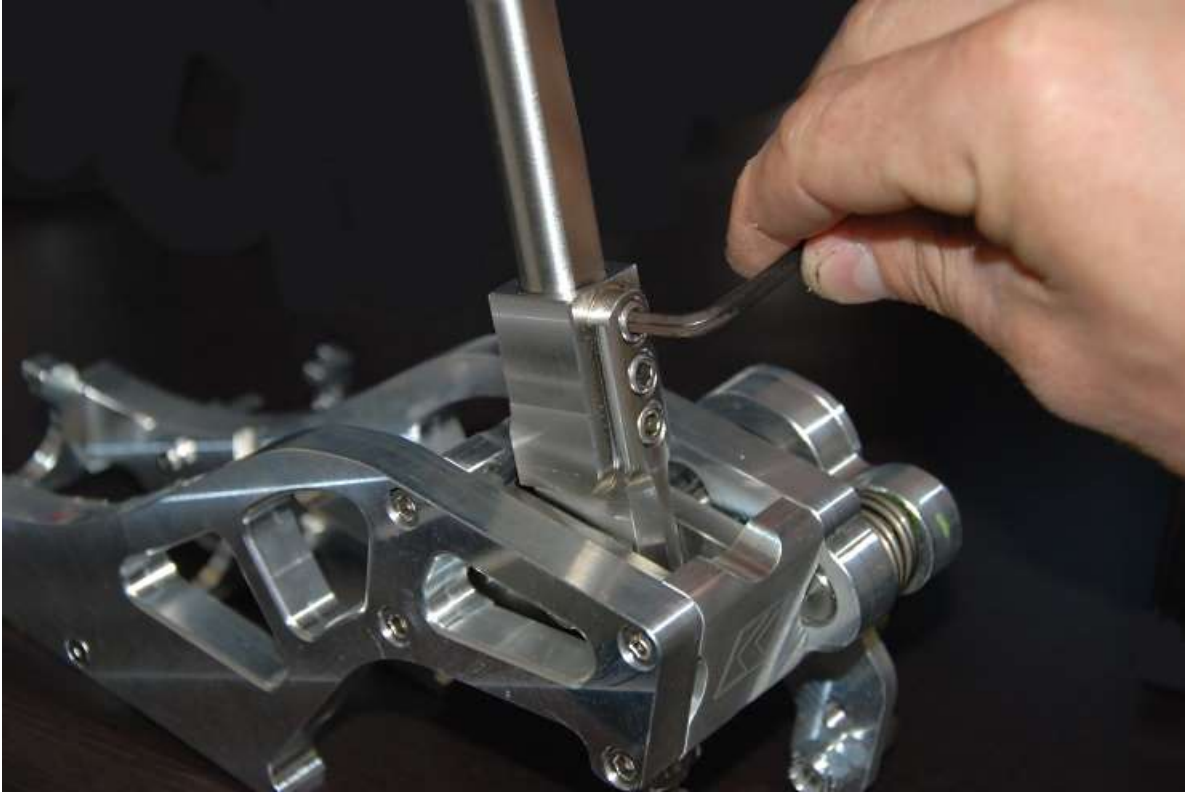
Remove the shoulder bolt from the side shift lever using a $\frac{7}{16}$ " wrench.



Screw the extra ball stud onto the side shift lever and tighten it using a $\frac{3}{8}$ " and $\frac{7}{16}$ " wrench on the inside lock nut.



Remove the plastic cup from the ball stud using a pair of pliers to pry it off.

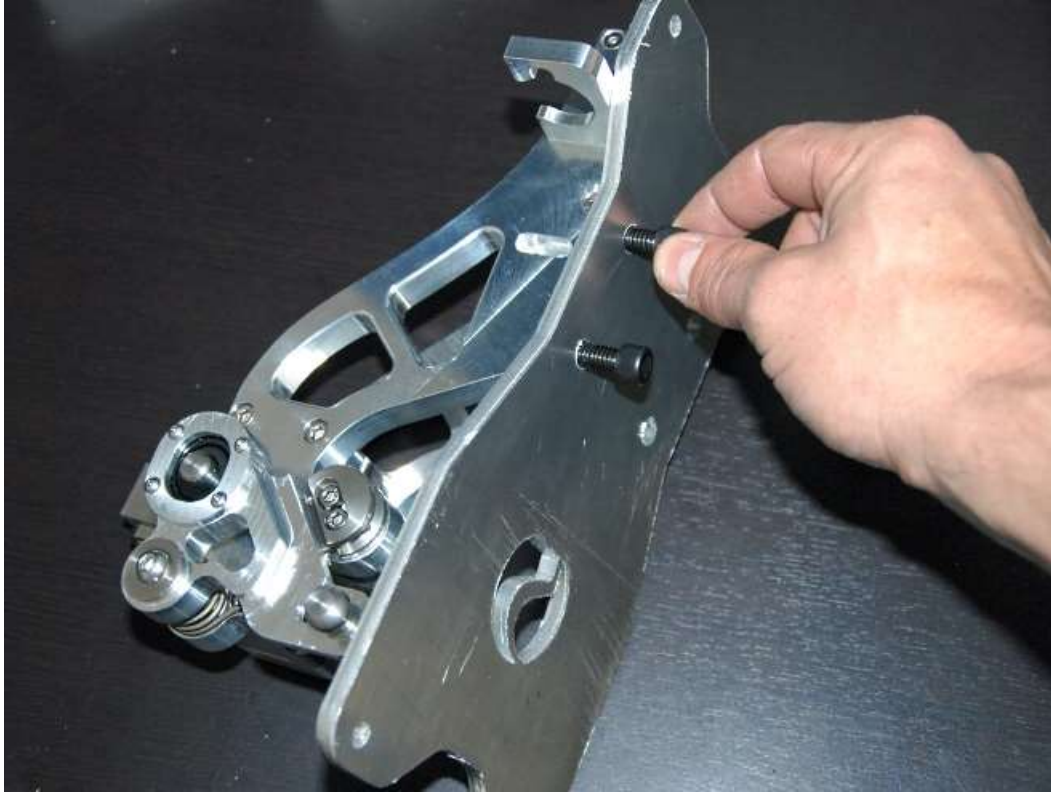


Attach the shifter handle to the shifter using the included $\frac{5}{32}$ " Hex key.

Attach the jam nut and shifter ball to the shifter handle.



The shifter will only screw onto the mount plate in one direction



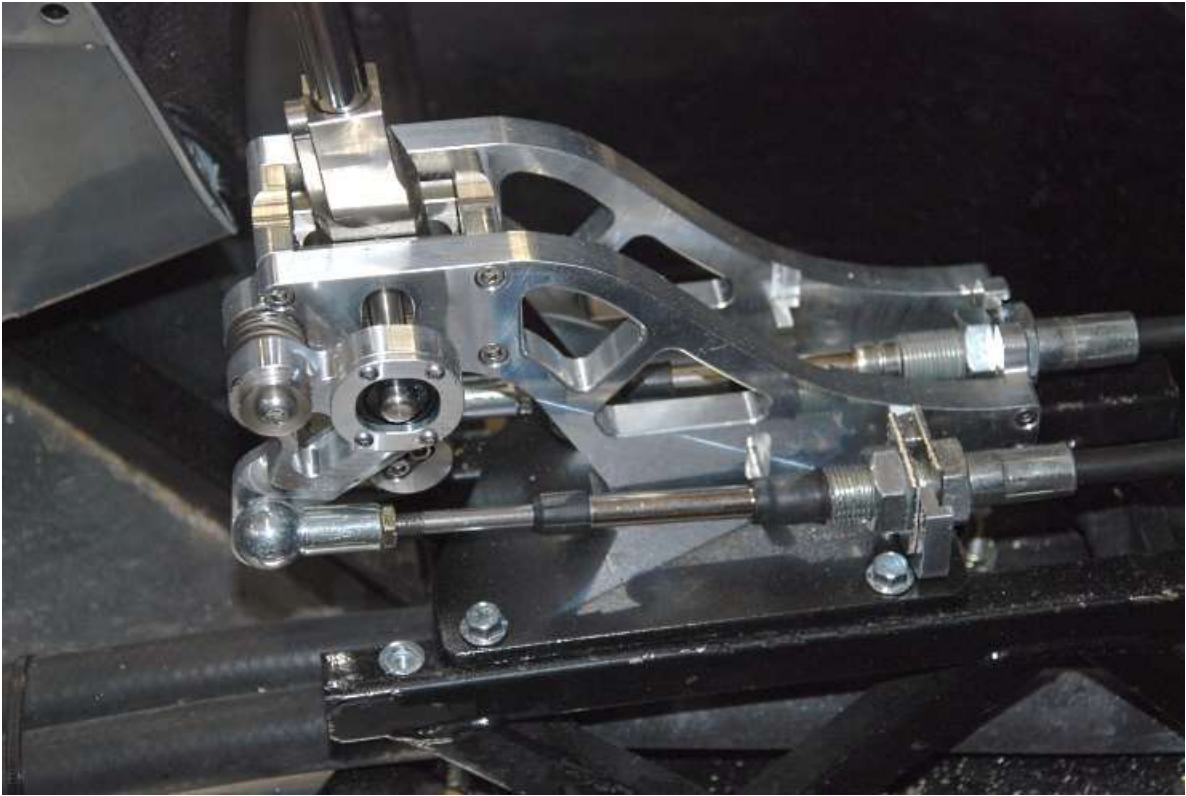
Screw the shifter onto the supplied mounting plate using the included screws.

Position the shifter so that the shift cable mounts are facing the front of the car. Sit in the driver seat and find the desired location for the shifter and clamp in place. Use a marker or $\frac{1}{4}$ " drill bit to drill into the frame through the mounting plate holes. Remove the shifter and drill $\frac{25}{64}$ " holes at the points marked for installing rivnuts.



Install rivnuts in the tubes for mounting the shifter.

Attach the shifter to the frame using the Kit shifter mounting screws.



Attach the included 13mm ball stud retainer on the side shift cable going to the side lever.



There should now be 13mm ball stud retainers on ends of both cables attaching to the shifter.

Attach the shift cables to the shifter.

Adjust the shifter cables at both ends of the cables so that the transmission will go into all gears.